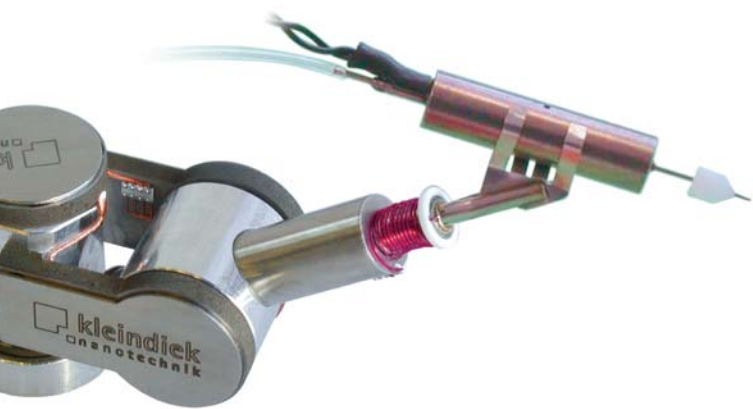


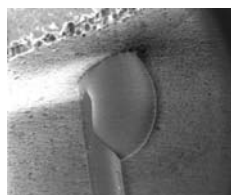
# MIS-EM Microinjector

The MIS-EM is a micro-valve plug-in system for the MM3A-EM micromanipulator. It enhances your system by allowing you to inject microscopic amounts of liquids and gases onto your samples in low-vacuum SEM.



The unique combination of precision manipulation and controlled microinjection has attracted a lot of interest in the MIS-EM since its launch. In addition to ground-breaking experiments with fluids, it is also possible to work with non-condensing gases.

The plug-in tool can be quickly and easily fitted to your existing MM3A-EM micromanipulator.



## Applications

- Food – sugar coating reactions
- Textile – swelling of fibres
- Pharma – chemical reactions
- Building – cement testing
- Biology – regenerative medicine
- Metallurgy – metal corrosion

## Technical specifications

- Microvalve length 31.4 mm
- Microvalve diameter 5.6 mm
- Inlet diameter 0.6 mm
- Outlet diameter 0.5 mm
- Weight 3 g
- Smallest drop size 100  $\mu\text{m}^*$
- Temperature range 273 K to 353 K
- Wetted materials  
EPDM seal (ethylene propylene),  
PEEK polymer (polyaryletheretherketone),  
PPS (polyphenylene sulphide),  
stainless steel, epoxy

*\* Measurement made using water; drop size is related to the viscosity of the fluid*

## Further information

- Contact us at [info@nanotechnik.com](mailto:info@nanotechnik.com)
- Find your local agent at [www.nanotechnik.com](http://www.nanotechnik.com)

