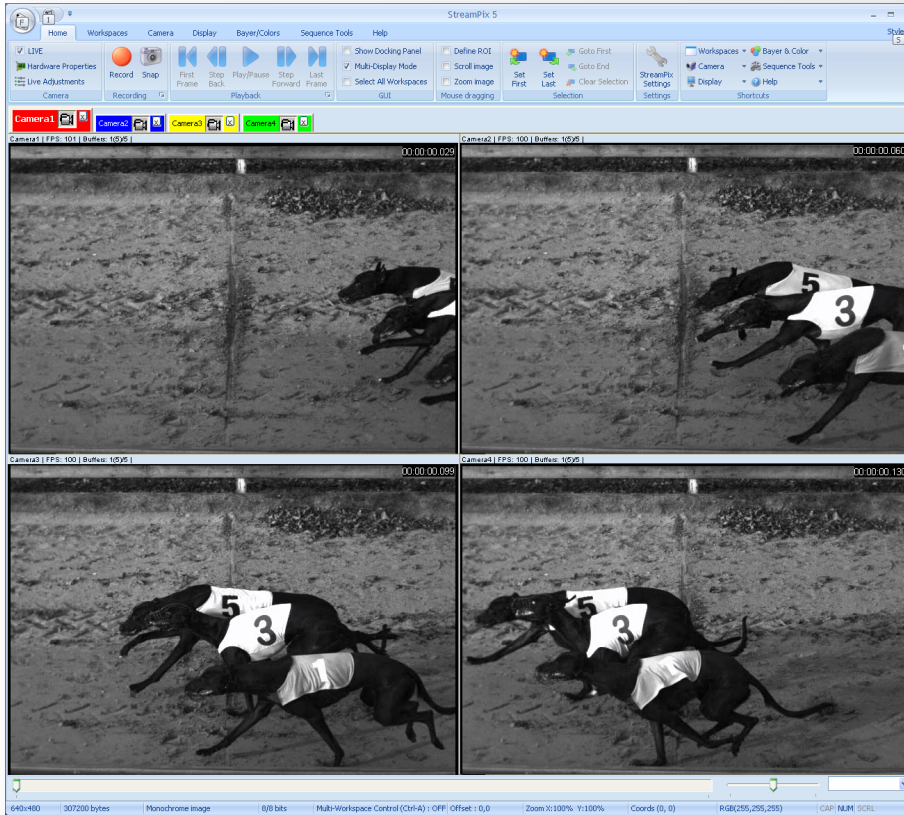




StreamPix5: Digital Video Recording Software

HIGH SPEED | HIGH RESOLUTION | MULTIPLE CAMERAS



Example: Record from multiple cameras simultaneously.

New StreamPix5:
Single or multiple
camera acquisition.

APPLICATIONS:

- Motion analysis
- Sports
- Life Science
- Military
- Troubleshooting

Turnkey systems
available including
computer, software
and integration.

FEATURES:

Real time video recording to PC hard disk or RAM*.

Acquire in monochrome or color, from GigE, IEEE1394 (FireWire), analog, digital, CameraLink and USB2 cameras*.

Acquire images as AVI, MOV, uncompressed or compressed with any Windows or Apple compatible CODEC installed*.

Export images as BMP, TIFF, multi-TIFF, JPEG, PNG, FITS, AVI or MOV.

VCR style controls: Record, Play, Rewind, Fast-Forward, Step and Pause.

Time stamps with iRIGB or GPS.

Color balance, histogram and other real time image processing functions.

Supports a wide selection of frame grabbers and cameras.

For Windows XP, Windows Vista and Windows 7. [32 and 64 bits].

* Depending on hardware configuration.

NORPIX



(...cont'd)

FEATURES:

Time lapse video acquisition.

Use of the shelf hardware technology

Record Audio

Add time stamps, text comments or bitmap images as overlays on each image.

Continuous video loop recording.

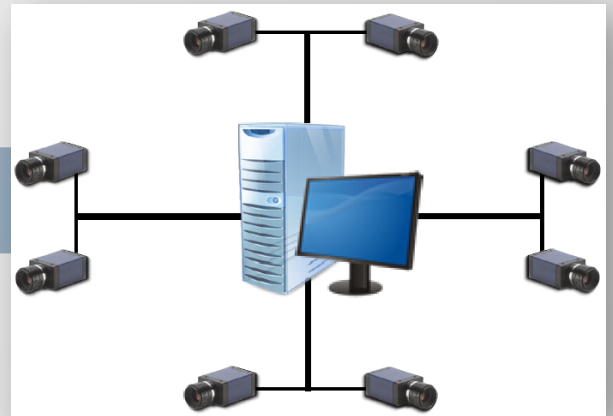
Windows levelling.

Bayer conversion.

Trigger on event or level.

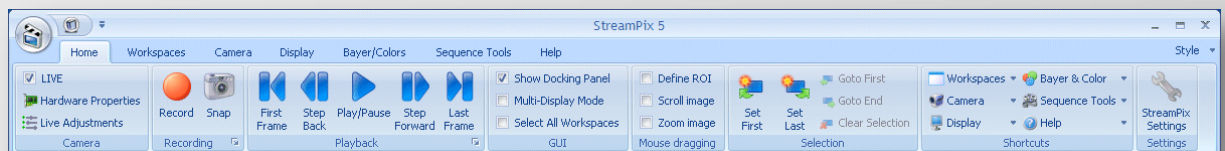
Recording script.

Multi camera recording systems.



New Ribbon-Based Interface

HIGH SPEED | HIGH RESOLUTION | MULTIPLE CAMERAS

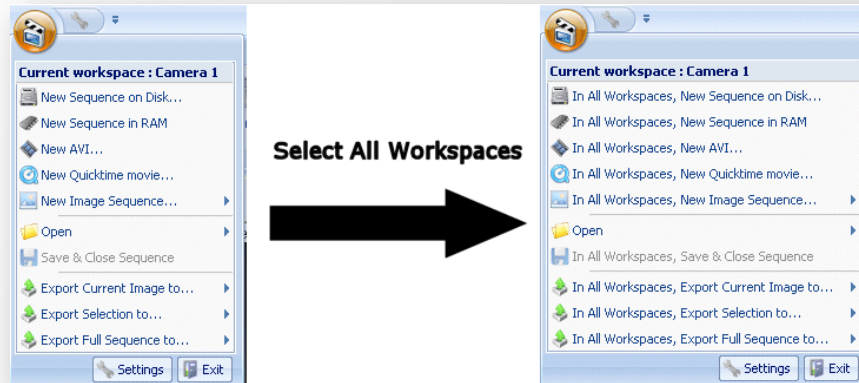


RIBBON BAR



New Ribbon-Based Interface

HIGH SPEED | HIGH RESOLUTION | MULTIPLE CAMERAS



The improved contextual menu allows to simultaneously control multiple workspaces.

Norpix

StreamPix5 MODULES:

Bwave audio recording: Multi-layered audio recording.

Motion detection: Detect motion or change main image to generate a trigger.

Color remapping LUT: LUT transformations.

PrePost Module: Record before and after an event.

DAQ Module - 1 D data acquisition: Acquire data such as temperature, pressure and more along with video.

Pulse Generated Module for triggering: Synchronize multiple cameras simultaneously.

GPS Module: Acquire GPS positioning along with video.

IRIG-B: Time stamp your image with IRIG-B timing.

TV out: Secondary full screen.

LTC: Time stamping for audio and video.



Also available:

StreamPix REMOTE:

Remote view StreamPix5 image (live feed or playback).

Remote control over the main features of StreamPix5.

Create new remote session based on computer IP address and client (StreamPix5 workspace) name.

Show real-time client status.

File history available for better management.

Efficient CPU usage and network traffic monitoring.

Sends notifications to a 3rd party UDP server application.

HERMES API

StreamPix is built upon the Hermes API.

The API is a set of easy to use C++ or .NET libraries.

Modules for grabbing, scripting, exporting (BMP, JPEG, TIFF, PNG, AVI), recording & playback of sequence files, display and more.

Available with all StreamPix supported cameras & frame grabbers.

Get started fast with extensive documentation, demos & sample projects.

MODULE SDK FOR StreamPix5

Program input/output data from third-party sources such as outside temperature, atmospheric pressure or GPS positioning along and in sync with your images in a sequence.

Visual C++ compatible.

Custom development services available.

Supported Hardware:

StreamPix supports a wide choice of cameras and frame grabbers from many manufacturers. For a complete and up to date list of supported hardware, please visit our website at: www.norpix.com.

NorPix Inc.

1751 Richardson, suite 6117
Montreal, QC H3K 1G6 Canada

Tech support: support@norpix.com

Technical support: 514-846-0009 ext: 27

Sales: sales@norpix.com

Sales information: 514-824-2517

Ordering: 514-846-0009 ext: 23

Web: www.norpix.com