

UNIVERSAL MOUNTING SYSTEMS

Vincent Associates has designed these universal mounting rings to allow our line of shutter devices to be easily integrated into user applications. These rings can be utilized from our 1mm aperture to the 90mm size. By simply fastening these rings to any flat surface, the shutter can be easily attached via its rear external optical thread into the customer’s system. The different size rings are available for each of our shutter devices depending on the shutter’s external optical thread size. Please review the following data, if you need further information; please contact one of our technical representatives for further assistance.

90 MOUNTING RING

The #90 Mounting Ring will allow the CS25 series only, to be mounted to a flat surface (see FIGURE 1). The mounting ring would be attached to a flat surface using the four .120 inch diameter holes. The shutter would then attach to the ring via the #3 housing rear thread (1.625 inch x 40TPI).

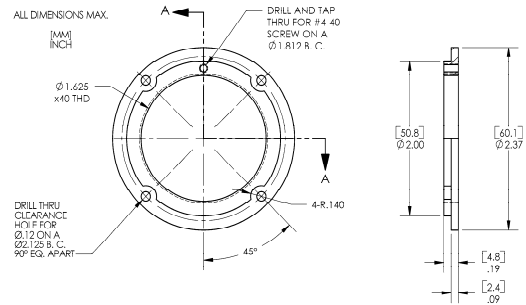


Figure 1

100 MOUNTING RING

The #100 mounting ring is a mounting flange which will allow all shutter types LS, VS and CS25 series to be mounted to a flat surface. The mounting ring would be attached to a flat surface and the shutter would then attach to the ring via the #2 housing rear thread (1.625in x 40TPI).

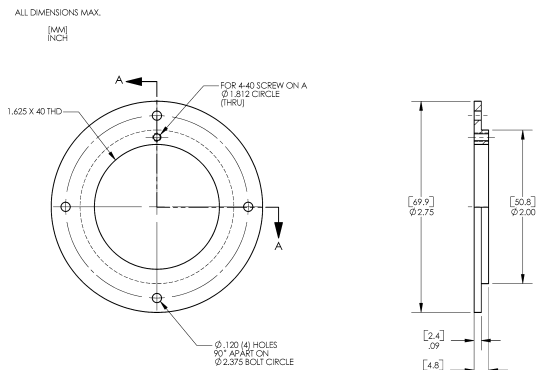


Figure 2

101 MOUNTING RING

The #101 mounting ring is a mounting flange which will allow the CS45 series, to be mounted to a flat surface. The mounting ring would be attached to a flat surface and the shutter would then attach to the ring via the #2 housing rear thread (2.000in x 40TPI).

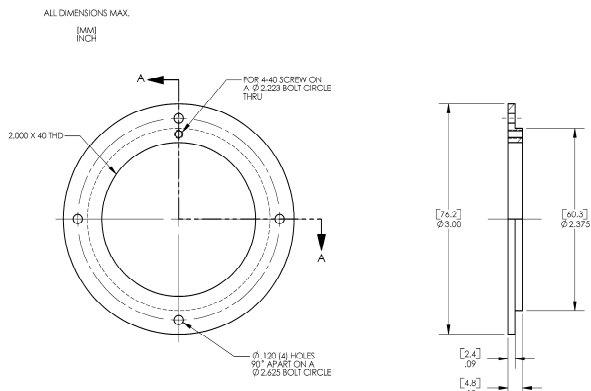


Figure 3

UNIVERSAL MOUNTING SYSTEMS (continued)

102 MOUNTING RING

The #102 mounting ring will allow the CS65 series to be mounted to a flat surface. The mounting ring would be attached to a flat surface using the four .120 inch diameter holes. The shutter would then attach to the ring via the #2 housing rear thread (3.00 inch x 40TPI).

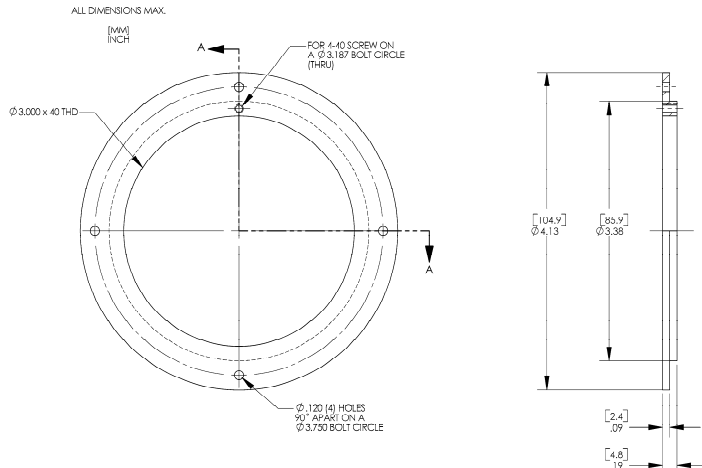


Figure 4

103 MOUNTING RING

The #103 Mounting Ring will allow the CS90 series only, to be mounted to a flat surface (see Figure 4). The mounting ring would be attached to a flat surface using the four .120 inch diameter holes. The shutter would then attach to the ring via the #3 housing rear thread (4.00 inch x 40TPI).

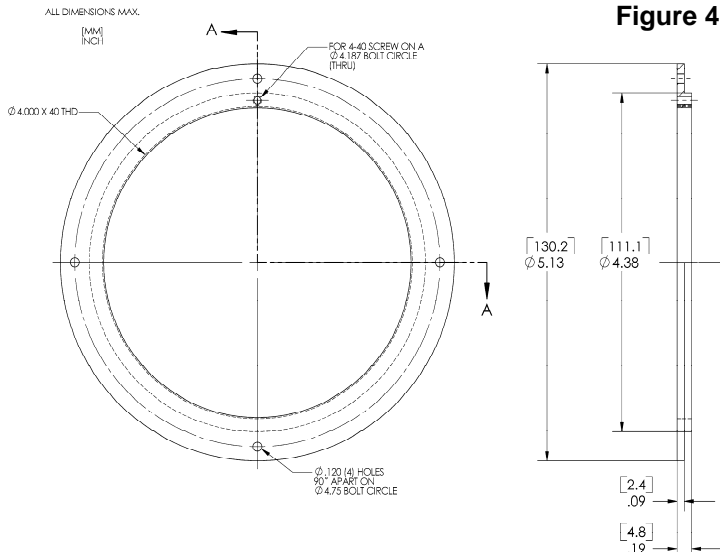


Figure 5

525 IRIS MOUNT

The #525 25mm Variable Iris can be directly attached to a CS25 25mm aperture shutter housing replacing the standard #3 housing cover or used as a stand alone 25mm variable iris. The #525 is attached to the CS25 #3 housing utilizing the three #2 flat head clearance holes. These holes can also be used to mount the device to a user's application. The iris contains a 1.625x40TPI thread and an 8-32 post mounting hole. The #525 Iris also can also be attached into the user's application using the #90 mounting ring above. The aperture range is 2mm to a 25mm maximum diameter.

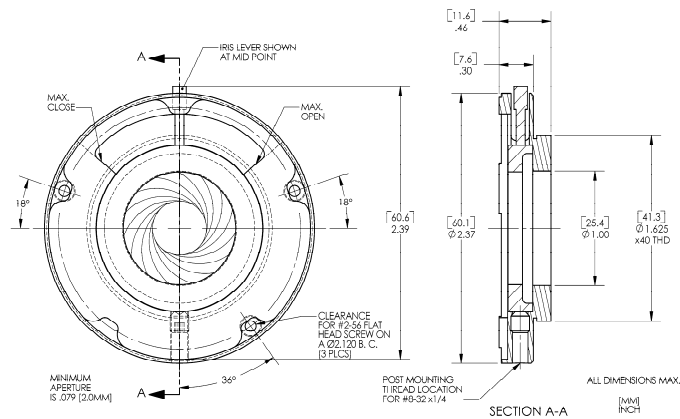


Figure 6

Due to our ongoing product development program, Vincent Associates reserves the right to discontinue or change specifications or designs at any time, without incurring any obligations. Teflon is a registered trademark of E.I. DuPont U.S. Pat. No. 3,427,576; 3,595,553; 3,967,293; 6,652,165. Drawing shown for illustrative purposes only. Updated 03/04/2008.