

VIDEO MOUNTING SYSTEMS

The UNIBLITZ® shutter line has proven to be a beneficial enhancement to number of video imaging applications. Due to the growing demand for shutters capable of addressing the needs in this application area, Vincent Associates has designed mounting systems that can be interfaced with popular video systems. On the following pages, you will find information on many types of video systems including "F-C", "C", and "T" video mounts. The various mounting selections found on this sheet are available as an option with any of our series #2 or specific #3 cased shutters. When ordering one of these options, please refer to the "PRODUCT OPTIONS" section of the specific shutter series you are interested in. After reviewing the following data sheet, if you cannot find what is required for your particular application, please contact our technical representatives for further assistance.

105 MALE C MOUNT ADAPTER

The #105 male C Mount adapter flange adapts specific #2 or #3 shutter housing types to user equipment fitted with a C mount thread (1.00in x 32TPI). This adapter can be attached to the #2 housing rear surface (via the 1.625in x 40TPI thread) or the front surface (via three #2-56 flat head screws). The LS and VS14/25 series, only, can be configured with this flange type.

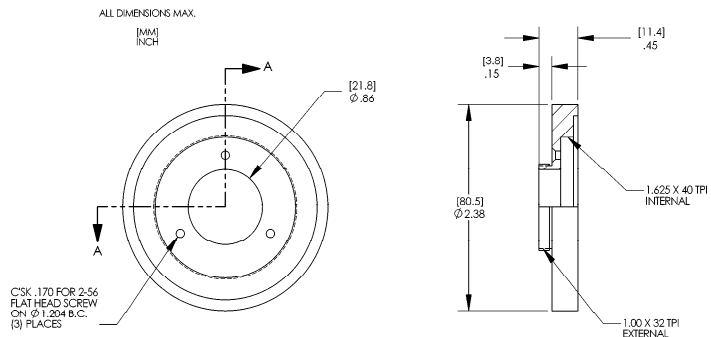


Figure 1

106 FEMALE C MOUNT ADAPTER

The #106 female C mount adapter flange adapts specific #2 or #3 shutter housing types to user equipment fitted with a male C mount thread (1.00in x 32TPI). This adapter can be attached to the #2 housing rear surface (via the 1.625in x 40TPI thread) or the front surface (with the use of a #130 thread adapter). The LS and VS14/25 series can be configured with this flange type.

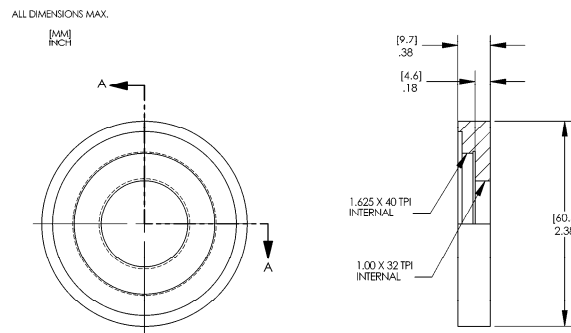


Figure 2

110 MALE T MOUNT ADAPTER

The #110 T Mount Adapter flange adapts specific #2 or #3 shutter housing types to user equipment fitted with a T mount thread (42mm x 0.75mm pitch). This adapter can be attached to the #2 housing rear surface (via the 1.625in x 40 TPI thread) or the front surface (via three #4-40 flat head screws). The VS14/25 and VS35 series, only, can be configured with this flange type.

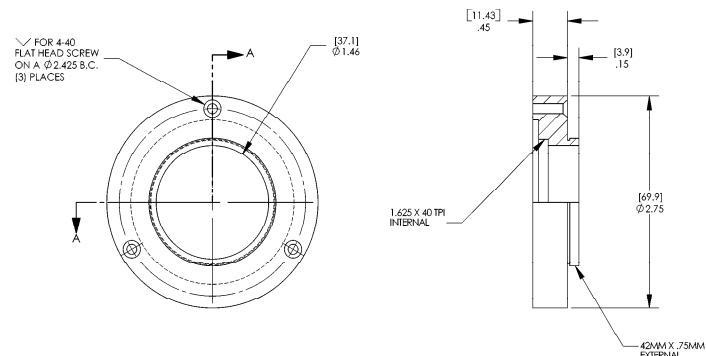


Figure 3

VIDEO MOUNTING SYSTEMS (continued)

125 CAMELIA TYPE ADAPTER

The #125 CAMELIA type adapter is a mounting adapter to attach specific shutter housing types to user equipment fitted with a M51 x 0.75mm pitch thread. The adapter can be attached to the housing rear surface via the 2.00 inch x 40 TPI optical thread. The #125 adapter is intended for use with VS35, and CS45 series shutters equipped with the #17 "F" type Video Adapter.

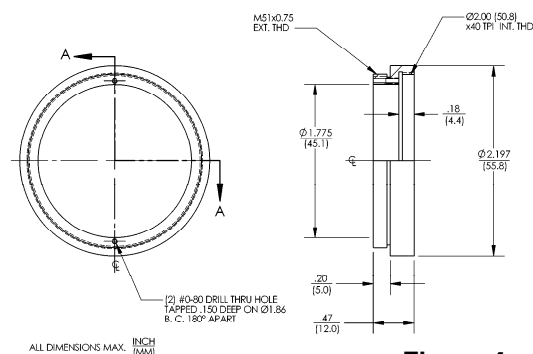


Figure 4

126 "F" TYPE MALE ADAPTER

The #126 Nikon type adapter is a male “F” mount which adapts specific #2 or #3 housing types to user equipment fitted with a Nikon female “F” type lens mount. The adapter includes a dovetail ring that can be attached to the housing rear surface via the 2.00X40 TPI optical thread. Rotating the shutter to a desired orientation is attainable via (3) set screws in the “F” Type Male Adapter. This adapter can also be used with a housing configured with the #17 Nikon Female Adapter.

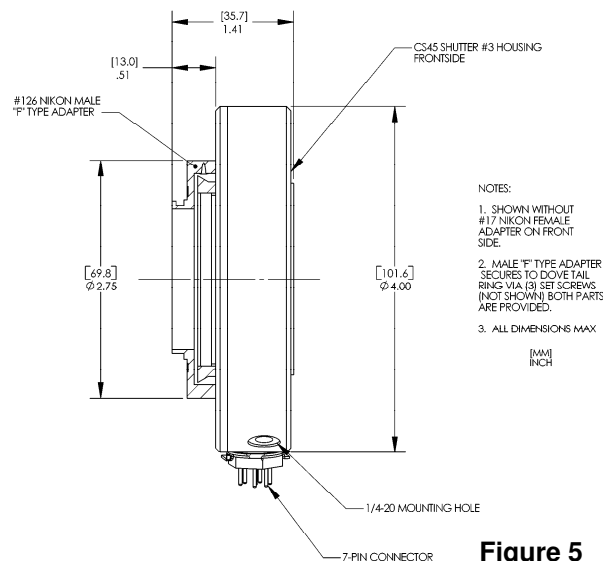


Figure 5

127 DALSTAR ADAPTER

The #127 DALSTAR type adapter is a mounting adapter to attach specific #3 shutter housing types to user equipment fitted with a M72 x 0.75 mm pitch thread. The adapter can be attached to the #3 housing rear surface via the 2.00 inch x 40 TPI optical thread. The #127 adapter is recommend for use with VS25, VS35, and CS45 series shutters equipped with the #17 "F" Type Video Adapter.

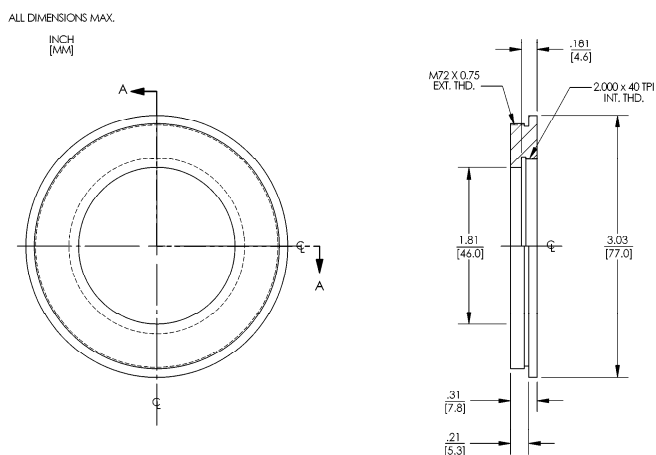


Figure 6

VIDEO MOUNTING SYSTEMS (continued)

128 COOKE ADAPTER

The #128 Cooke type adapter ring adapts specific #3 shutter housing types to a COOKE camera. The adapter is attached to the camera via the six M2.5 P. H. screws and the shutter is then attached via the 2.00 inch x 40 TPI optical thread. The #128 adapter is recommend for use with VS35 and CS45 series shutters. These shutters can also be equipped with the #17 "F" Type Video Adapter.

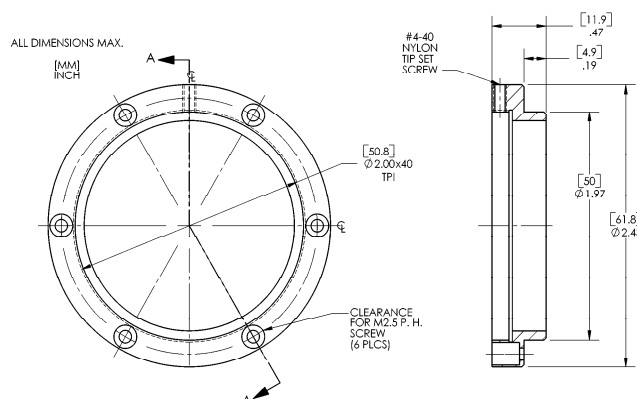


Figure 7

17 CS25 F-C VIDEO ADAPTER

The #17 CS25 video adapter systems adapts a CS25 shutter housing and a Nikon lens to a video camera that is equipped with C mount thread (1.00in x 32TPI). No modification to the camera should be necessary. The shutter unit replaces a standard F-C mount (see drawing for F-C mount outline for comparison). The C Mount threaded portion is integral to the CS25's standard housing. This configuration can also be ordered on the VS14/25, VS35, and CS45 shutter series. (See figure 8 for the unit's outline configuration.)

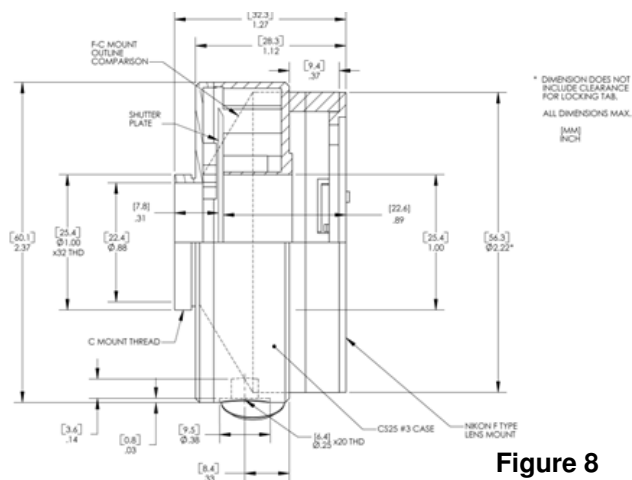


Figure 8

17 CS35 F-C VIDEO ADAPTER

The CS35 #17 housing differs from the CS25 version given that the rear thread is a 2.00x40TPI thread. It can be adapted, using these threads, into user applications via the #125 Camelia Adapter, the #126 "F" Type Male Bayonet Adapter, the #127 Dalstar Adapter, the #128 Cooke Camera Adapter, or any user application configured with the 2.00x40TPI female thread. A similar configuration can also be ordered on the VS14/25, VS35, CS25, or CS45 shutter series. Click here for the #17 mount user manual. See below for the unit's outline configuration.

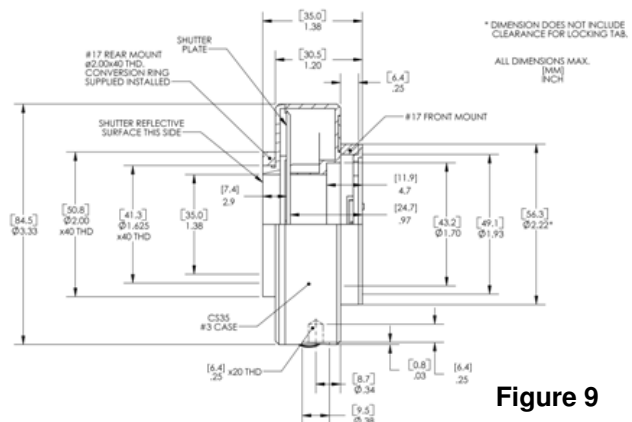


Figure 9

17 CS45 VIDEO ADAPTER

The CS45 #17 housing differs from the VS14/VS25 version given that the rear thread is a 2.00x40TPI thread. It can be adapted, using these threads, into user applications via the #125 Camelia Adapter or the #126 "F" Type Male Bayonet Adapter. See figure 9 for the unit's outline configuration.

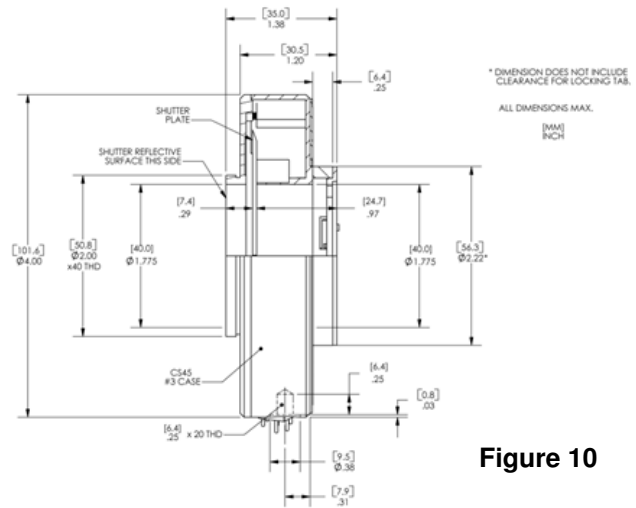


Figure 10

17 VS14/VS25 F-C VIDEO ADAPTER

The #17 video adapter systems adapts a VS14 or VS25 shutter housing and a Nikon lens to a video camera that is equipped with C mount thread (1.00in x 32TPI). No modification to the camera should be necessary. The shutter unit replaces a standard F-C mount (see drawing for F-C mount outline for comparison). This adapter is integral to the housing. This configuration can also be ordered for the VS35, CS25 and CS45 shutter series. See figure 11 for the unit's outline configuration.

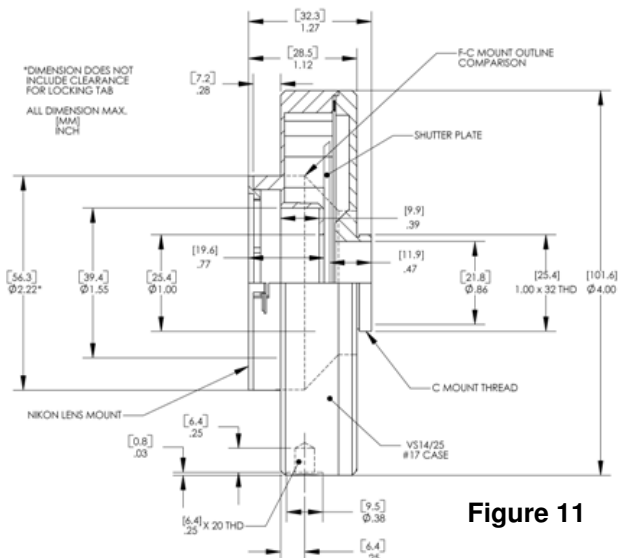


Figure 11

17 VS35 VIDEO ADAPTER

The VS35 #17 housing differs from the VS14/VS25 version given that the rear thread is a 2.00x40TPI thread. It can be adapted, using these threads, into user applications via the #125 Camelia Adapter or the #126 "F" Type Male Bayonet Adapter. See figure 12 for the unit's outline configuration.

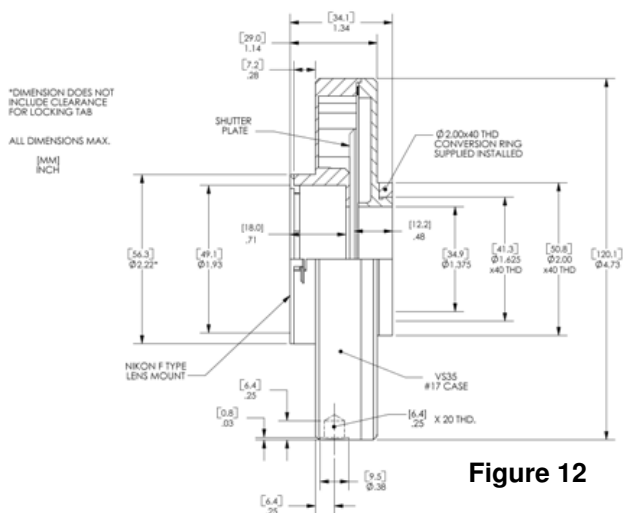


Figure 12