

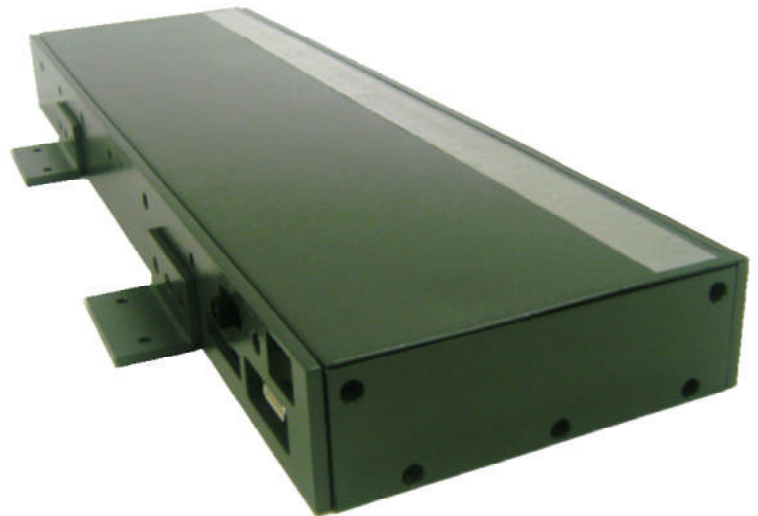
X-ray Line-Scan Camera Series

XW8800 Series

The X-Scan Imaging XW8800 series of linear array x-ray cameras offers high performance for x-ray scanning applications at extra long lengths. At the heart of a XW8800 camera are X-Scan Imaging's CMOS silicon imaging detector array chips providing wide dynamic range and solid-state reliability. A wide selection of scintillation material converts x-rays into visible light for detection by the imaging array and optimizes both sensitivity and resolution. The close proximity of the analog-to-digital converters (ADC) to the detector chips and the use of low-voltage-differential-signal (LVDS) technology minimize interference noise. A collection of hardware for interfacing to computers and software including drivers, an intuitive application programming interface (API), and example code software expedite developments of x-ray scanning systems.

Key Features

- Wide range of resolutions & selection of lengths
- Incorporates X-Scan Imaging's proprietary XW8800 Photodiode Detectors
 - Selectable resolution
 - Low noise, wide dynamic range, high sensitivity
 - High MTF
- 16-bit analog-to-digital conversion
- Up to 9000 lines/second
- Supports variable scan speed with position synchronization
- Software development kit
 - Device drivers, libraries, standard API
- Rigid & ideal for large size applications



Applications

- Food and industrial inspection
- Package content inspection
- Security and cargo screening
- Industrial non-destructive testing (NDT)

XW8800 X-ray Line-Scan Camera Series

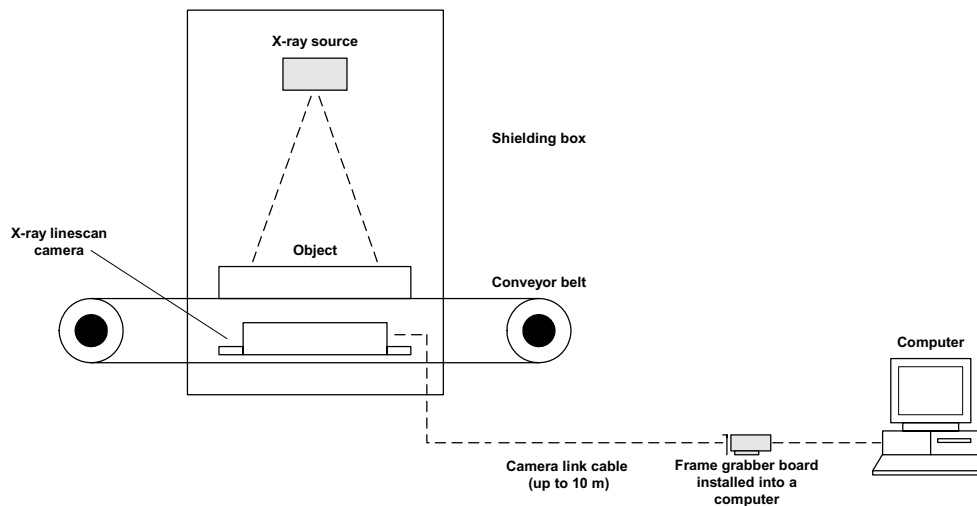
Models

| Model | Active length ⁱ | Number of pixels | | | |
|-----------|----------------------------|------------------|----------------|---------------|---------------|
| | | XW8804 Series | | XW8808 Series | XW8816 Series |
| | | High resolution | Low resolution | | |
| XW88□□-18 | 463 mm | 1152 | 576 | 576 | 288 |
| XW88□□-20 | 514 mm | 1280 | 640 | 640 | 320 |
| XW88□□-24 | 617 mm | 1536 | 768 | 768 | 384 |
| XW88□□-36 | 925 mm | 2304 | 1152 | 1152 | 576 |
| XW88□□-48 | 1234 mm | 3072 | 1536 | 1536 | 768 |
| XW88□□-60 | 1542 mm | 3840 | 1920 | 1920 | 960 |

ⁱ Other detector lengths are available upon request. Minimum active length is 154mm; no maximum length limit.

Setup

The XW8800 series camera system includes a camera unit, a software development kit, power adapter and cabling. The frame-grabber to be installed in the computer is provided optionally. The objects to be scanned should be passed between the x-ray source and the camera.



Information furnished by X-Scan Imaging is believed to be accurate and reliable. However, no responsibility is assumed by X-Scan Imaging Corporation for its use. Users are responsible for their products and applications using X-Scan Imaging components. To minimize the risks associated with users' products and applications, users should provide adequate design and operating safeguards. No responsibility is assumed by X-Scan Imaging Corporation for any infringements of patents or other rights of third parties that may result from the use of the information. No license is granted by implication or otherwise under any patent or patent rights of X-Scan Imaging Corporation.

Camera Link® is a registered trademark of the Automated Imaging Association, Ann Arbor, Mich.

Tel: +1 408 432 9888

70 Bonaventura Dr., San Jose, CA 95134, U.S.A.
Fax: +1 408 432 9889

www.x-scanimaging.com