

CLS-221 Camera Link v2.1 Simulator

The CLS-221 Camera Link Simulator is an affordable high-performance video test pattern generator supporting all Camera Link configurations (base, medium, full, 72-bit, 80-bit). The CLS-221 supports all Camera Link video formats including those introduced in the new Camera Link v2.1 specification. Fully programmable video timing enables the CLS-221 to mimic the characteristics of almost any camera. New features include enhanced timing performance, bayer color support, and color bar & pseudo-random video patterns. Control is via an RS-232 port, USB, or frame grabber comm port. The CLS-221 also supports the AIA validation test pattern.



The CLS-221 connects to devices with the larger MDR connector via standard cables, and to devices with the smaller SDR/HDR connector via adapting cables.

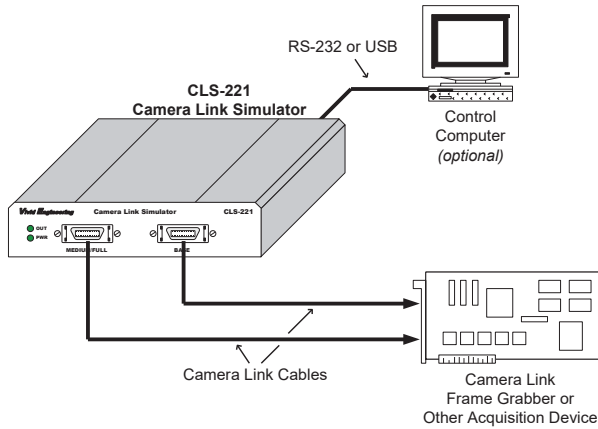
The CLS-221 Camera Link Simulator is very useful for the development and test of Camera Link components and systems, and is easy to use with included quick-configuration software.

Features

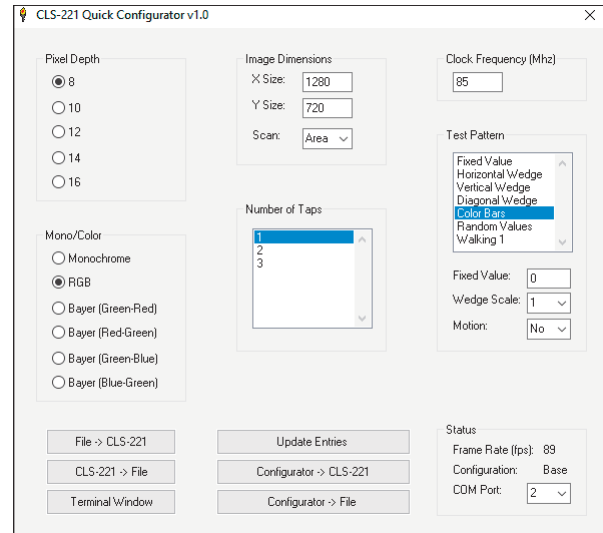
- Supports all Camera Link configurations (base/medium/full/72-bit/80-bit)
- Fully programmable video timing, mimics almost any camera
- Supports all video formats including new Camera Link v2.1
- Video pattern options include wedge, color-bar, and pseudo-random
- Bayer color support
- Supports AIA validation test pattern sequences
- Easy to use with included quick-configuration software. May also be programmed via a command line interface
- Controlled via an RS-232 port, USB (via optional adapter), or frame grabber comm port
- Operates from 10 MHz to 95 MHz, above/below the normal Camera Link 20-85 MHz range for performance/margin testing
- Can operate standalone using stored user configurations
- Sturdy aluminum enclosure w/ mounting flange
- Multi-nation power supply and RS-232 cable included
- 3-year warrantee
- Made in USA



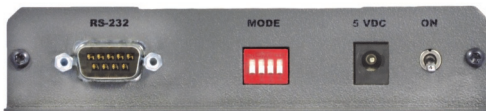
Typical Application



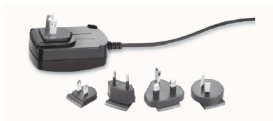
Quick-Configuration Software



Rear Panel



Power Supply



Optional USB Adapter



Specifications

Feature	Specification
Video Interface	Camera Link v2.1 base/medium/full/72-bit/80-bit
Video Connectors	26-pin MDR type
Frequency Range	10-95 MHz
Output Device	Texas Instruments DS90CR287 (per specification)
Serial Port	RS-232 male 9-pin D-Sub, modem cable included
Mode Switch	4 position, Control and configuration select
Quick-Configuration SW	Windows XP, 7, 8, 10
Power Supply	Universal wall style w/ outlet plug set
Power Jack	2.1 x 5.5 mm, center-positive. Locking style optional
Power Requirements	5 VDC, 700 mA typical
Cabinet Dimensions	5.28" (L) x 1.18" (H) 7.12" (D)
Weight	16 oz
Operating Temp Range	0 to 50° C
Storage Temp Range	-25 to 75° C
Relative Humidity	0 to 90%, non-condensing



Ordering Information

Model	Description
CLS-221	Camera Link Simulator (with standard power supply)
CLS-221-L	Camera Link Simulator (with locking-plug power supply)
CLS-221-N	Camera Link Simulator (without power supply)
USB-ADAPTER	USB to Serial RS-232 Adapter (optional)



415 Boston Turnpike #305 • Shrewsbury, MA 01545 • USA
 phone 508-842-0165 • fax 508-842-8930
 email info@vividengineering.com
 web www.vividengineering.com

rev 1.2, 5/25/18